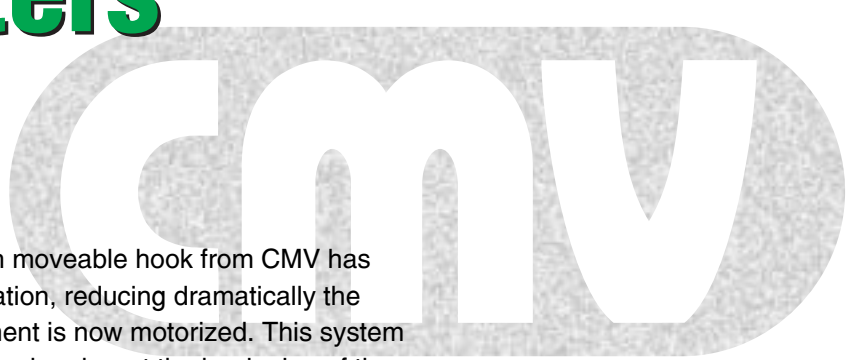


# Wheelmasters With Hook



The new series of shotblasting machines with moveable hook from CMV has new features that makes a lot easier its operation, reducing dramatically the operator effort. For example the hook movement is now motorized. This system takes the hook to the inner part of the blasting chamber at the beginning of the blasting cycle and takes it out when the cycle is over. The operator drives it through the control panel.

All safety devices and electric components are according to the CE directives and are complying with the most important international norms, the control panel is PLC equipped and posses a friendly man-machine interface that assures easy and safe operation.

The high performance wheels can assure an excellent production rate with low energy consumption.

Besides that, the wheels are made from extremely abrasive resistant materials.

The inner part of the blasting chamber is made of 14% manganese steel and 28% chrome steel at parts more subject to abrasion, assuring a huge durability.



## Abrasive separator

Uses the traditional air-wash abrasive separation and it is adjustable, optionally can be equipped with vibrating sieves for applications that demand a very precise abrasive separation like shot peening.

## Wheels

High performance, built from high chrome alloy cast steel that is extremely abrasive resistant, is dynamically and statically balanced. The abrasive metering valve allows a precise control over the quantity of abrasive that is being propelled.

## Screw conveyor / bucket elevator

Both are oversized with bearings totally sealed against abrasive and are driven by permanent lubrication gearmotors. The buckets are made from nodular cast iron, which is very abrasive resistant.

## Hook movement

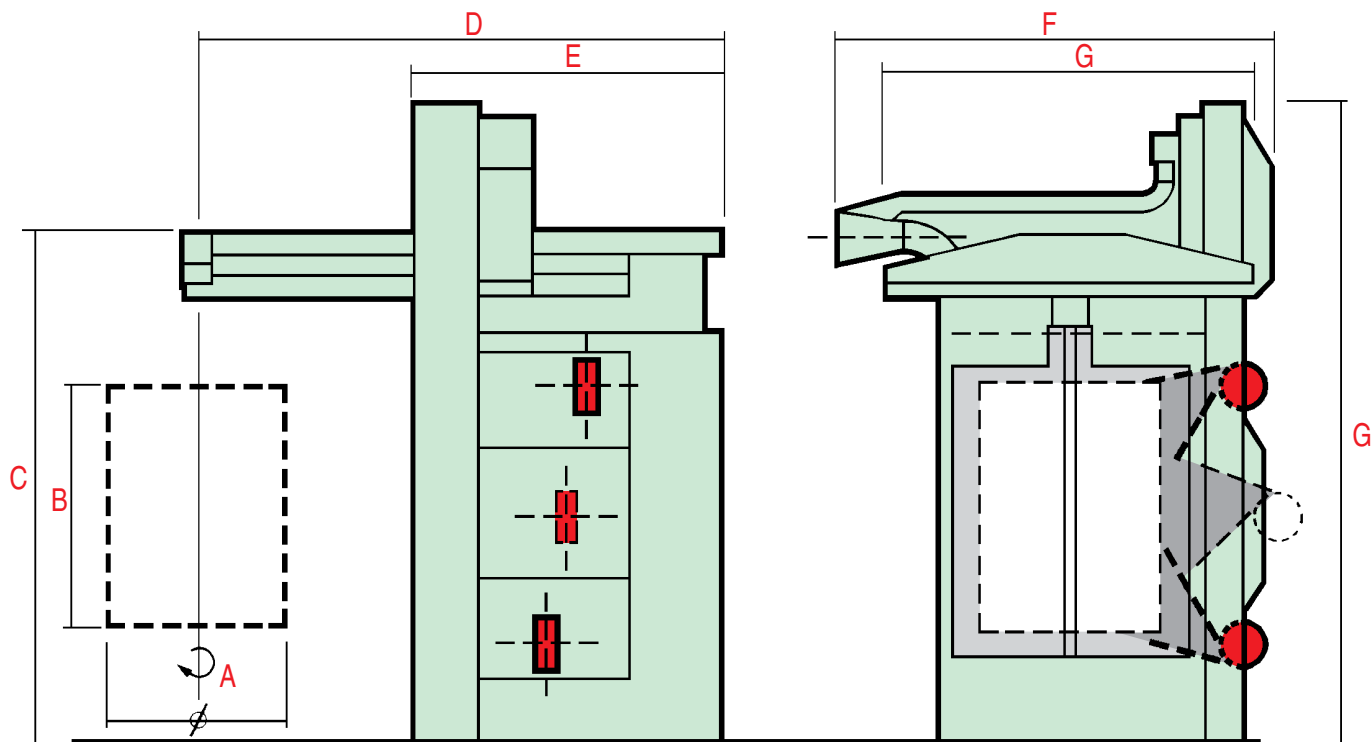
Made through a permanent lubrication gearmotor that drives the transmission chain that acts directly over the hook that keeps the parts to be blasted. The turning done by the hook exposes the parts to the blasting stream. This turning movement automatically turns into linear movement when loading or unloading the equipment.

Control panel detail



Extremely compact, posses cartridge type filters with automatically cleaning via reverse air pulsejet, which is PLC controlled. This system is according to the international standards for pollution emission and workers safety.

Machines can be equipped with various options of accessories, among those we point out: wet dust collector (for explosion proof applications), special inner lining and special wheels for gritblasting, adjustable hook movement speed, etc.



Model	Hook capacity	Number of wheels	Wheels power		Total volume of steel shot propelled (kg/min)	BMF dust collector advised (m3/h)	Dimensions (mm)							
			HP	KW			A Diam.	B	C	D	E	F	G	H
GM-0610-11	350	2	7,5	5,5	165	02H 2400	600	1000	2600	2600	1100	2000	1300	3980
GM-0914-11	500	2	7,5	5,5	165	02H 3600	900	1400	3000	2600	1500	2800	1800	4300
GM-0914-15	500	2	10	7,5	220	03H 5000	900	1400	3000	2600	1500	2800	1800	4300
GM-1218-15	500	2	10	7,5	220	04H 6000	1200	1850	4000	3600	2000	3200	2500	4750
GM-1218-22,5	500	3	10	7,5	330	04H 7200	1200	1850	4000	3600	2000	3200	2500	4750
GM-1520-22,5	1000	3	10	7,5	330	04H 7200	1500	2000	4155	4300	2890	5490	2750	6100
GM-1530-30	1500	4	10	7,5	440	06H 10800	1500	3000	5343	4300	2890	5490	2750	7880

P.S.: Specifications are subject to change without prior notice.



**CMV CONSTRUÇÕES MECÂNICAS LTDA.**  
 Av. das Indústrias, 940 - Distrito Industrial  
 CEP 94.930-230 - Cachoeirinha - RS - Brasil  
 Phone +55 51 3041.6633 - Fax + 55 51 3041.6644  
 Home Page: [www.cmv-online.com.br](http://www.cmv-online.com.br)  
 E-mail: [cmv@cmv-online.com.br](mailto:cmv@cmv-online.com.br)

**Master representative for Europe:**  
 Rimex Techniek B.V.  
 P.O. Box 166 - 2180 AD Hillegom  
 Einsteinstraat 6 - Holland  
 Phone +31 252 518316  
 Fax +31 252 522857